

*The Newsletter of the*  
**Philadelphia Area Chapter**  
**EGA**



Volume 43  
 No. 4

THE EMBROIDERERS' GUILD OF AMERICA  
*Mid-Atlantic Region*

OctNovDec  
 2020



## A WORD FROM YOUR PRESIDENT, CINDA HALL

***"I've learned that you can tell a lot about a person by the way (s)he handles these three things: a rainy day, lost luggage, and tangled Christmas tree lights." Maya Angelou***

*Well, what can I say? I think we can add to that quote, " how we handle the pandemic". I never thought that we would still be in COVID limbo and not be able to have our meetings, but we adapt. We are still scheduled for our weekly Wednesday night (7:30 P.M.) Zoom meetings to keep in touch and for our monthly general meeting. I again thank Lisa for setting up the meetings with her work Zoom account, so we can talk and have show-and-tell and talk. Zoom has been a saver of sanity! I sure miss our in-person meetings, though. I will let everyone know when we hear from St. Luke Church for our return to face-to-face meetings.*

*We are still on course for the Ludington Library display from November 2-December 3, 2020. Please survey your finished projects and decide what to contribute. (See the information inside.) We want everyone to participate and share your lovely work. An email will go out in October to let you know how we will be collecting your items.*

*As for plans for the next few meetings: In October, we will be doing a Pointed Star. Look for Patty's email and info in this newsletter; in November, we would normally have our Annual Luncheon, but due to the pandemic, we have cancelled it for this year and we hope to reschedule it for next spring; in December, we will hold our holiday party via Zoom. We will show-and-tell our work, and you can present your President's Challenge. Voting for "Best in Show" will take place at that time; and in January, we will be making a beautiful Beaded Crystal Icicle. Be sure to read the article about each of these events in this newsletter.*

*Please watch for emails from the Board and me about events as they occur, and we will guide you as best we can. Stay safe!*

**- Cinda Hall, Leader of the PAC**

|  |  |  |
|--|--|--|
| <p><b>October</b><br/> <b>Folded Fabric</b><br/> <b>Pointed Star</b><br/>                 7pm October 28, 2020<br/>                 via Zoom</p> | <p><b>November</b><br/> <b>Annual Luncheon</b><br/> <b>Postponed</b></p> | <p><b>December</b><br/> <b>Holiday Party &amp;</b><br/> <b>President's Challenge</b><br/>                 7pm December 9, 2020<br/>                 via Zoom</p> |
|--|--|--|

**OFFICERS**

**President** – Cinda Hall

**Vice-President** – Gerty Romer

**Secretary** – Liz Suess

**Treasurer** – Margaret Hardie

**Region Representatives** – Gerty Romer

– Diane Bishop

**Past Chapter President** – Kim Thornton

**Past MAR Region Dir** - Patty Smith Gardner

**Philadelphia Area Chapter of the Embroiderers' Guild of America Membership**

**Annual Dues:** \$50.00

**Plural membership:** within Mid-Atlantic Region \$16.00

**Lifetime Member:** \$18.00

This includes National and Regional dues and subscription of Needle Arts Magazine.

Meetings are held the fourth Wednesday of the month at St. Luke Lutheran Church, Devon (unless otherwise noted). Any questions-contact any board member.

**St. Luke Lutheran Church** is located at the intersection of Valley Forge Road and Conestoga Road. The address is:  
203 N. Valley Forge Road, Devon, PA.  
610-688-0122

*All EGA chapters are granted permission to reprint original material in this newsletter with proper credit given to the author and the Philadelphia Area Chapter. Any copyrighted material will be indicated. Written permission to reprint the material must be obtained from and granted by the author or artist.*

**STANDING COMMITTEES**

**Community Outreach – Volunteer needed!**

**Education** – Patty Smith Gardner

**Fund Raising – Volunteer needed!**

**Librarian** – Gerty Romer

**Membership & Directory** – Phyllis Archer

**Newsletter** – Laura Bonnington

**Programs** – Diane Bishop

**Web & Social Media** – Liz Suess

**Our Chapter Website is:** [www.philaega.org](http://www.philaega.org)

**The Mid-Atlantic Region Website is:**

[www.marega.org](http://www.marega.org)

**To enter the member-only area; email is:**

[westitch@marega.org](mailto:westitch@marega.org) **and password is:**

**National EGA Website is:** [www.egausa.org](http://www.egausa.org)

**Members-only area Login:** individual, as set with National EGA Office

**INCLEMENT WEATHER POLICY**

If the Easttown-Tredyffrin School District (KYW1060 Radio District #854) is closed that day or has cancelled evening programs on the date of the chapter meeting, the PAC meeting for that evening will be cancelled.



Thank you to **Lisa McGinnis** for coordinating our chapter meetings via Zoom and helping us to continue to get together during this time! Thank you to **Gerty Romer** for coordinating and teaching the Christmas in July Ornament THAP!



The positions of **Fund-Raising Chair** and **Community Outreach Chair** remain open. Board meetings are held monthly (except July and August) at Panera Bread in King of Prussia. Attendance at Board meetings for these positions is welcome, but not required, Consider volunteering for these positions!



**THE PAC CURRENTLY HAS  
24 MEMBERS & 7 PLURAL MEMBERS!**

**WELCOME TO OUR NEW PAC MEMBER!**

Tricia Johnson (plural)

The PAC extends our sincere condolences and heartfelt sympathy to Past Chapter President Kim Thornton and her sister and former PAC Secretary Kathryn Shillenn on the recent loss of their mother. Please keep Kim, Kathryn, and their families in your thoughts and prayers.

### **WEEKLY WEDNESDAY GET-TOGETHERS VIA ZOOM-**

Since the chapter members have been unable to meet in person, the chapter is holding weekly get-togethers for members **via Zoom on Wednesdays when a chapter meeting is not scheduled to be held**. You can join either by computer/tablet or by telephone, and with or without camera. **The meetings start at 7:30 P.M.** If you need assistance getting started on Zoom, let us know! Look for an email message from Lisa McGinnis with the full schedule and connection instructions as well as a weekly email reminder about the upcoming meeting (which may be from someone other than Lisa). It is a great way to stay connected with your stitching buddies and show us what you're working on, or just sit in and chat, but BYOB!

### **2020 PROPOSED SLATE OF OFFICERS -**

The current Board has agreed to keep their positions for another year. We will need to vote on this to make it official. Due to the quarantine, Cinda will be sending out an email, asking for you to vote via return email. The following Slate of Officers has been proposed for 2020:

- PRESIDENT – Cinda Hall
- VICE-PRESIDENT – Gerty Romer
- SECRETARY – Liz Sues
- TREASURER – Margaret Hardie
- REGION REPRESENTATIVES – Gerty Romer & Diane Bishop

## IN THE NEWS –

**Have you seen the PAC's new website?** Liz Suess did a fabulous job rebuilding the chapter's website. Be sure to check out all the features at <https://www.philaega.org>. Liz is still seeking information and photographs about past chapter events and projects to add to the website. If you have any suggestions, please contact Liz at . **BUT (isn't there's always a "BUT"?), the EGA requires that each chapter member complete and return a Newsletter and Website Permission to Publish Form.** A copy of the form is also included with this newsletter. This completed form gives permission to the PAC to include your photo and/or your needlework, etc. in the Newsletter and on the chapter website. **If you have not yet signed and submitted your completed form, please return it to Cinda ASAP.**

**Have you seen this free website?** <http://stitchpalettes.com/> The site has a thread palette generator which matches DMC colors with their closest Anchor equivalents, identifies complimentary DMC colors, and gives five graduated shades using a selected DMC color. It offers palettes by color, palettes by schemes (warm v. cool, retro v. modern, etc.), palettes by seasons, palettes by themes (landscape, floral, etc.) and palettes by mood! It also offers a daily photograph and identifies the DMC colors which correspond to the colors in the photograph! Thanks to Phyllis Archer for sharing this site with us!

Remember that the **EGA Stitch-Along (SAL) page on Facebook** is another great way to stay connected with 4292 (at last count) of your fellow EGA stitchers and has a little project each month.

## REGION REPRESENTATIVES REPORT – GERTY & DIANE

**SMART day** is scheduled for October 17, 2020 and will be hosted by the Brandywine Chapter. Both Gerty and Diane will be attending the MAR Meeting that day, which will be held via Zoom. Money continues to be available to MAR members through the Joan Masterson and PRIDe scholarships.

A MAR seminar is scheduled to be held in 2022 in Norfolk, Virginia.

**Camp Wannastitch** is still scheduled for January 15-18, 2021 with the early birds starting January 14, 2021. The room rates will be the same as last year. Watch for announcements regarding registration for Camp Wannastitch, which has been delayed until possibly as late as November 2020. There is a Facebook page for Camp Wannastitch which will have updates, and a dedicated email address for urgent matters – [MARCampWannastitch@gmail.com](mailto:MARCampWannastitch@gmail.com).

**A VERY IMPORTANT NOTE ABOUT MAR EMAIL MESSAGES - DO NOT FORWARD MAR MESSAGES TO ANYONE, INCLUDING OTHER PAC/MAR MEMBERS!** Forwarding the message automatically unsubscribes you from the mailing list of the mail service that the MAR is using, Mailchimp. If you want to forward the message to someone else, save or copy/paste on your computer/tablet, and then send in a new email to your intended recipient.

## PLANNING FOR LUDINGTON LIBRARY EXHIBIT

The PAC's 2018 exhibit in the display cases at Ludington Library in Bryn Mawr was such a success that we're going to do it again this November! The library has eight display cases in the entrance hall where we will display our work from the morning of November 4, 2020 to the morning of December 3, 2020 (please note the changes in dates).

The library has very strict guidelines about how items can be displayed in the cases, and we're going to try planning the layouts of the exhibits in advance this time rather than trying to do it on the fly while setting up the exhibits. If you have any small easels, plate holders, unframed mirrors, stands/pedestals, etc. that you would like to loan the chapter for the exhibit, please let us know! We'll also be making labels for the items with the stitchers' names and information about the items. We want to make a list of what everyone plans to display in order to get an idea of the space we need for each item, the layouts, etc. We are asking for fall and winter holiday-related stitchery but also for items from past EGA meetings, classes or conventions. Unfortunately, we will not have space this time for hanging pieces. We would love for everyone to display items!

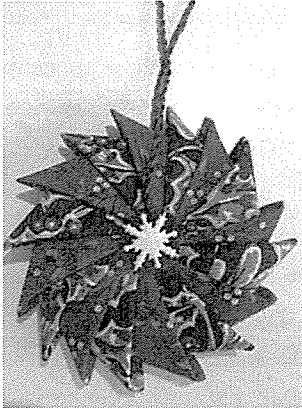
Again, this display requires an EGA National form, [Individual Appraisal of Fine Arts for Chapter or Regional Exhibits or Shows](#), filled out by each of us for what you plan to exhibit. You can print and fill this out at home from the email sent on August 30. Any questions, please give Cinda a call.

## SEPTEMBER MEETING – OUTREACH IN FLEECE

Thank you to everyone who participated in the PAC's annual EGA service project. Chapter members made more than 32 blankets and collected at least 61 pairs of socks which will be distributed by Deacon Dennis Coleman at Christ Episcopal Church in Pottstown. This is just a portion of our donation. Way to go, PAC! Job well done!



## OCTOBER MEETING – FOLDED FABRIC STAR



This project was planned when we were going to be together in person, . . . but let's try and adjust.

As we talked about earlier this summer, this uses regular quilting cotton prints. I used two different Christmas prints for mine, but you can be creative and make yours in anything that strikes your fancy. This can be made from a fat quarter of fabric. In one color of a subtle print they can be a flower! Or red and white could be peppermint candies!

You will need 16 square pieces, each 3" square. They can all be the same, or in complementary prints, or solids.

The finished product can be an ornament, or a pin, or a decoration for pull or knob.....lots of ways to use them. They make great package bows that double as an ornament for an extra gift!

Before the meeting, please go to YouTube and watch this video, which shows the whole process of making the stars: <https://www.youtube.com/watch?v=w9YMaTibaWk&t=13s> . The templates and precuts that she is talking about are no longer available, so after watching the video, please prepare your center circles as follows:

From a piece of **heavy interfacing or thin cardboard, cut a 2.75" circle.**

**Mark the center, and cut out a ¼" circle** from the middle, making a sort of donut.

Mark the donut all around the edge with a pencil: you want 16 even marks. (mark 12, 3, 6, 9 o'clock, then halfway between those, then halfway between all of the marks. This will make 16 marks. No need for precision here, just eyeball them). These are to align your triangles as you sew around the circle.

Then cut your fabric squares, you need exactly 16 of them, 3" square. You can go ahead and iron them into triangles as shown in the video if you wish, in order to be ready to stitch them at the meeting.

For the centers, you will want a button, or a fabric yo-yo, or a pompom, or some other creative little decoration to cover the points right in the middle.

*If you are finding this part too difficult to try on your own, I will be making extra center circles and cutting out extra Christmas prints in the 3" squares, and you can pick them up from me before the Zoom meeting!*

**We will meet on Zoom on Wednesday, October 28, 2020 at 7:30 P.M.**

**We will be sending out the link to the meeting that week.**

So Go! Shop for fabric! Raid your stash! Please plan to be there for our October meeting, when we will have fun with these. See you then!



## DECEMBER MEETING – SHARE WHAT YOU MADE IN 2020 & PRESIDENT'S CHALLENGE

Mark your calendars for December 9, 2020, the date of our annual holiday gathering and the President's Challenge for 2020! This year we will be gathering via Zoom. Let's see what you made in 2020! The President's Challenge this year is to use something from nature to make a stitched whatever! You have lots of time to think of something and make your design your own. Voting for "Best in Show" will take place during the Zoom meeting.

## JANUARY MEETING – BEADED ICICLE

This Beaded Icicle looks lovely on your tree or in your window and would make a great family heirloom to be passed down through the generations. It sparkles with 4mm Crystal Bicone Beads and Seed Beads using a variation of Spiral Stitch. Spiral Stitch is a very easy stitch once you get into the rhythm of it. After you have completed the first 5 or 6 rows, the shape starts to form and it becomes much easier to see what you are doing. The icicle is approximately 4 3/4" (12cm) long by 5/8" (1.5cm) wide at the widest point.

This makes a perfect gift or package addition, or make a set to hang from many branches of your tree or in each window.

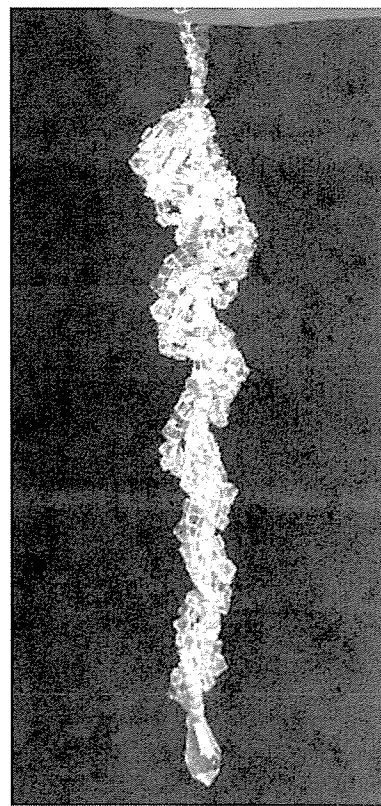
Patty will be making kits for this program for \$7 each, including all beads and the Fireline thread to make one Icicle. They will be in Crystal AB Swarovski Bicones and drop bead. You may order as many as you wish!

**To order kits, please respond to Patty by January 1, 2021 by email.**

Send email with "Icicle Kit Order" in the subject to: [patty@phila.embroiderersguild.com](mailto:patty@phila.embroiderersguild.com). Please include the number of kits that you would like, and I will get back to you about how to pay for them.

If you wish to use your own beads (how about another color??), here is the complete list of supplies needed to make one icicle:

- **50 4mm Fire Polished Round Beads or Swarovski Bicones (Crystal AB or color of your choice)**
- **1 13mm Swarovski Drop (Crystal AB or coordinating color of your choice)**
- **1.5 grams Size 8 Seed Beads (Toho Rainbow Crystal or color of your choice)**
- **3 grams Size 11 Seed Beads (Toho Rainbow Crystal or color of your choice)**
- **Size D Fireline or Power Pro (Crystal, White, or color to blend with beads)**
- **Size 10 Beading Needle • Beading mat, bead board or piece of felt (~6" square) to hold beads**



Beaded Icicle Ornament shown here has alternate silver beads: Kits will contain the listed Toho Rainbow Crystal beads

**The January Meeting has been scheduled for Wednesday, January 27, 2021 at 7:30 P.M. It is currently scheduled to be held via Zoom.**

| PHILADELPHIA AREA CHAPTER EGA<br>2020 CALENDAR |    |    |    |    |    |    |          |    |    |    |    |    |    |           |    |    |    |    |    |    |
|--|----|----|----|----|----|----|----------|----|----|----|----|----|----|-----------|----|----|----|----|----|----|
| JANUARY  |    |    |    |    |    |    | FEBRUARY |    |    |    |    |    |    | MARCH     |    |    |    |    |    |    |
| S  | M  | T  | W  | T  | F  | S  | S        | M  | T  | W  | T  | F  | S  | S         | M  | T  | W  | T  | F  | S  |
|  |    |    | 1  | 2  | 3  | 4  | 2        | 3  | 4  | 5  | 6  | 7  | 8  | 1         | 2  | 3  | 4  | 5  | 6  | 7  |
| 5  | 6  | 7  | 8  | 9  | 10 | 11 | 9        | 10 | 11 | 12 | 13 | 14 | 15 | 8         | 9  | 10 | 11 | 12 | 13 | 14 |
| 12   | 13 | 14 | 15 | 16 | 17 | 18 | 16       | 17 | 18 | 19 | 20 | 21 | 22 | 15        | 16 | 17 | 18 | 19 | 20 | 21 |
| 19   | 20 | 21 | 22 | 23 | 24 | 25 | 23       | 24 | 25 | 26 | 27 | 28 | 29 | 22        | 23 | 24 | 25 | 26 | 27 | 28 |
| 26   | 27 | 28 | 29 | 30 | 31 |    |          |    |    |    |    |    |    | 29        | 30 | 31 |    |    |    |    |
| APRIL  |    |    |    |    |    |    | MAY      |    |    |    |    |    |    | JUNE      |    |    |    |    |    |    |
| S  | M  | T  | W  | T  | F  | S  | S        | M  | T  | W  | T  | F  | S  | S         | M  | T  | W  | T  | F  | S  |
|  |    |    | 1  | 2  | 3  | 4  |          |    |    |    |    | 1  | 2  |           | 1  | 2  | 3  | 4  | 5  | 6  |
| 5  | 6  | 7  | 8  | 9  | 10 | 11 | 3        | 4  | 5  | 6  | 7  | 8  | 9  | 7         | 8  | 9  | 10 | 11 | 12 | 13 |
| 12   | 13 | 14 | 15 | 16 | 17 | 18 | 10       | 11 | 12 | 13 | 14 | 15 | 16 | 14        | 15 | 16 | 17 | 18 | 19 | 20 |
| 19   | 20 | 21 | 22 | 23 | 24 | 25 | 17       | 18 | 19 | 20 | 21 | 22 | 23 | 21        | 22 | 23 | 24 | 25 | 26 | 27 |
| 26   | 27 | 28 | 29 | 30 |    |    | 24       | 25 | 26 | 27 | 28 | 29 | 30 | 28        | 29 | 30 |    |    |    |    |
|  |    |    |    |    |    |    | 31       |    |    |    |    |    |    |           |    |    |    |    |    |    |
| JULY   |    |    |    |    |    |    | AUGUST   |    |    |    |    |    |    | SEPTEMBER |    |    |    |    |    |    |
| S  | M  | T  | W  | T  | F  | S  | S        | M  | T  | W  | T  | F  | S  | S         | M  | T  | W  | T  | F  | S  |
|  |    |    | 1  | 2  | 3  | 4  |          |    |    |    |    |    | 1  |           |    | 1  | 2  | 3  | 4  | 5  |
| 5  | 6  | 7  | 8  | 9  | 10 | 11 | 2        | 3  | 4  | 5  | 6  | 7  | 8  | 6         | 7  | 8  | 9  | 10 | 11 | 12 |
| 12   | 13 | 14 | 15 | 16 | 17 | 18 | 9        | 10 | 11 | 12 | 13 | 14 | 15 | 13        | 14 | 15 | 16 | 17 | 18 | 19 |
| 19   | 20 | 21 | 22 | 23 | 24 | 25 | 16       | 17 | 18 | 19 | 20 | 21 | 22 | 20        | 21 | 22 | 23 | 24 | 25 | 26 |
| 26   | 27 | 28 | 29 | 30 | 31 |    | 23       | 24 | 25 | 26 | 27 | 28 | 29 | 27        | 28 | 29 | 30 |    |    |    |
|  |    |    |    |    |    |    | 30       | 31 |    |    |    |    |    |           |    |    |    |    |    |    |
| OCTOBER  |    |    |    |    |    |    | NOVEMBER |    |    |    |    |    |    | DECEMBER  |    |    |    |    |    |    |
| S  | M  | T  | W  | T  | F  | S  | S        | M  | T  | W  | T  | F  | S  | S         | M  | T  | W  | T  | F  | S  |
|  |    |    |    | 1  | 2  | 3  | 1        | 2  | 3  | 4  | 5  | 6  | 7  |           |    | 1  | 2  | 3  | 4  | 5  |
| 4  | 5  | 6  | 7  | 8  | 9  | 10 | 8        | 9  | 10 | 11 | 12 | 13 | 14 | 6         | 7  | 8  | 9  | 10 | 11 | 12 |
| 11   | 12 | 13 | 14 | 15 | 16 | 17 | 15       | 16 | 17 | 18 | 19 | 20 | 21 | 13        | 14 | 15 | 16 | 17 | 18 | 19 |
| 18   | 19 | 20 | 21 | 22 | 23 | 24 | 22       | 23 | 24 | 25 | 26 | 27 | 28 | 20        | 21 | 22 | 23 | 24 | 25 | 26 |
| 25   | 26 | 27 | 28 | 29 | 30 | 31 | 29       | 30 |    |    |    |    |    | 27        | 28 | 29 | 30 | 31 |    |    |

PAC EGA Board Meetings – 2<sup>nd</sup> Monday of each month (except July and August, and subject to change)  
at Panera Bread, 150 Allendale Road in King of Prussia at 7 P.M.

Any chapter member is welcome to attend and participate in a Board meeting!

PAC EGA Chapter Meetings – 4<sup>th</sup> Wednesday of each month, subject to change, at Saint Luke Evangelical  
Lutheran Church, 203 North Valley Forge Road, Devon, at 7 P.M.





**Sharing Chapters:** Please email your newsletter to Laura Bonnington, Newsletter Editor,  
Philadelphia Area Chapter -

(also, please ask if you want to use anything from this newsletter, I'd be happy to email you the document)



**sara caldwell**  
owner/designer

1165 west baltimore pike  
media, pa 19063  
telephone 610.892.2740

[www.bluesantabeads.net](http://www.bluesantabeads.net)

***Hello Prospective Member!***

If you are reading this newsletter and you are NOT a member of the Chapter, we invite you to drop in for a meeting. See Page 2 for information about times and locations. We are always happy to see new faces. The guild has learning opportunities for stitchers of all levels, and we are always trying something new! For further information, please call our President, **Cinda Hall**, or our Membership Chair, **Phyllis Archer** (contact info on page 2), who would be happy to provide information. Come and check us out - **You don't have to stitch alone!**



Search for "Phila ega"



Search for  
"The Philadelphia Area  
Chapter the Embroiderers'  
Guild of America"

