

# *The Newsletter of the* **Philadelphia Area Chapter** **EGA**



Volume 44  
No.1

THE EMBROIDERERS' GUILD OF AMERICA  
*Mid-Atlantic Region*

Jan/Feb/March  
2021



## A WORD FROM YOUR PRESIDENT, CINDA HALL

*"If they don't want me to dance in the yarn aisle, why the heck do they play the music?" – author unknown*

*Hello all. I actually thought about repeating the President's letter from the last newsletter. The reason, not much has changed. 2020 continues to throw punches. But on the bright side, what would we do without Zoom? It has been and is a God-send. We have continued with our planned stitchery projects and have just enjoyed each other's company. Thanks, again, to Lisa for setting up our Wednesday 7:30 P.M. meetings and gatherings on her Zoom membership. And thanks to all of you for joining the meetings.*

*Our Holiday party was a Zoom event, as well. It was so nice to see all the show-and-tell items. Thanks to those who participated in the President's Challenge, using an item from nature for a stitching project. Diane Bishop was the winner of Best in Show, with her stitched sea shell with pearls. Beautiful!*

*We had a very successful display of our needlework at Ludington Library. Thanks to all who participated. We had much praise and several requests by the library visitors to purchase our work. Great job everyone!*

*Be sure to check the upcoming projects and get your coupons in ASAP. With order delivery times uncertain, we need to get the kits made or ordered as soon as possible. Planned projects for later in 2021 include a bookmark with an Autumn motif and a beaded pumpkin designed by Mary Corbett. In September, we again plan to make fleece blankets and collect socks for our community outreach project.*

*Still no news about when we can have a meeting face-to-face at St. Luke Church. It will be great to finally see each other. I will keep you posted. Have a wonderful winter, and stay safe and healthy.*

**Cinda Hall, Leader of the PAC**

<b>January</b> <b>Beaded Icicle</b> <b>Ornament</b> 7pm January 27, 2021 via Zoom	<b>February</b> <b>Embroidered</b> <b>Spring Mask</b> 7pm February 24, 2021 via Zoom	<b>March</b> <b>Silk Ribbon Embroidery</b> <b>Spring Glory</b> <b>EGA Petite Project</b> 7pm March 24, 2021 via Zoom
---	--	---

### OFFICERS

**President** – Cinda Hall

(scrubbed)

**Vice-President** – Gerty Romer (scrubbed)

**Secretary** – Liz Gilbert

(scrubbed)

**Treasurer** – Margaret Hardie

(scrubbed)

**Region Representatives** – Gerty Romer

(scrubbed)

– Diane Bishop

(scrubbed)

**Past Chapter President** – Kim Thornton

(scrubbed)

**Past MAR Region Dir** - Patty Smith Gardner

(scrubbed)

### STANDING COMMITTEES

**Community Outreach** – Volunteer needed!

**Education** – Patty Smith Gardner

(scrubbed)

**Fund Raising** – Volunteer needed!

**Librarian** – Gerty Romer

(scrubbed)

**Membership & Directory** – Phyllis Archer

(scrubbed)

**Newsletter** – Laura Bonnington

(scrubbed)

**Programs** – Diane Bishop

(scrubbed)

**Web & Social Media** – Liz Gilbert

(scrubbed)

**Our Chapter Website is:** [www.philaega.org](http://www.philaega.org)

**The Mid-Atlantic Region Website is:**

[www.marega.org](http://www.marega.org)

**To enter the member-only area; email is:**  
(scrubbed) **and password is:** (scrubbed)

**National EGA Website is:** [www.egausa.org](http://www.egausa.org)

**Members-only area Login:** individual, as set  
with National EGA Office

### **Philadelphia Area Chapter of the Embroiderers' Guild of America Membership**

**Annual Dues:** \$50.00

**Plural membership:** within Mid-Atlantic Region \$16.00

**Lifetime Member:** \$18.00

This includes National and Regional dues and subscription of Needle Arts Magazine.

Meetings are held the fourth Wednesday of the month at St. Luke Lutheran Church, Devon (unless otherwise noted). Any questions-contact any board member.

**St. Luke Lutheran Church** is located at the intersection of Valley Forge Road and Conestoga Road. The address is:

**203 N. Valley Forge Road, Devon, PA.  
610-688-0122**

*All EGA chapters are granted permission to reprint original material in this newsletter with proper credit given to the author and the Philadelphia Area Chapter. Any copyrighted material will be indicated. Written permission to reprint the material must be obtained from and granted by the author or artist.*

### **INCLEMENT WEATHER POLICY**

If the Easttown-Tredyffrin School District (KYW1060 Radio District #854) is closed that day or has cancelled evening programs on the date of the chapter meeting, the PAC meeting for that evening will be cancelled.



Thank you to **Patty Smith Gardner** for coordinating and teaching the Folded Fabric Star at the October chapter meeting!



Congratulations to **Diane Bishop**, the winner of this year's President's Challenge!



The positions of **Fund-Raising Chair** and **Community Outreach Chair** remain open. Board meetings are held monthly (except July and August) at Panera Bread in King of Prussia. Attendance at Board meetings for these positions is welcome, but not required, and filling these vacancies will greatly help your Board and your chapter. Please consider volunteering for these important positions!



Mary Green  
(scrubbed)

THE PAC CURRENTLY HAS  
25 MEMBERS & 7 PLURAL MEMBERS!

WELCOME TO OUR NEW PAC MEMBER!

## IN THE NEWS –

Please congratulate Liz Suess on her recent marriage! Please note her name change to Liz Gilbert. Her email address remains (scrubbed).

Michelle Flamer's quilt "History Lesson" is featured in the November/December 2020 issue of the British publication Resurgence. "History Lesson" and another one of Michelle's quilts are currently on exhibit in the juried international exhibition "We Are the Story" with the Women of Color Quilters Network at the Textile Center in Minneapolis until June 12, 2021.

The EGA Facebook Stitch-Along (SAL) page now has 4,383 members and continues to grow! Check it out! Many of the projects have been the freebies available on the EGA website or in NeedleArts Magazine. This is another great way to stay connected with fellow stitchers!

## WEEKLY WEDNESDAY GET-TOGETHERS VIA ZOOM-

Since the chapter members have been unable to meet in person for some time, the chapter is holding weekly get-togethers for members via Zoom on Wednesdays when a chapter meeting is not scheduled to be held. You can join either by computer/tablet or by telephone, and with or without camera. The meetings start at 7:30 P.M. If you need assistance getting started on Zoom, let us know! Look for an email message from Lisa McGinnis with the full schedule and connection instructions as well as a weekly email reminder about the upcoming meeting (which may be from someone other than Lisa). It is a great way to stay connected with your stitching buddies and show us what you're working on, or just sit in and chat, but BYOB!

## STITCH-IN-PUBLIC SATURDAY GET-TOGETHERS-

Our Friday and Saturday Get-Togethers from 10:00 A.M. to 2:00 P.M. in the Food Court at Wegmans Market located at One Village Drive in King Of Prussia, near the PA Turnpike, Route 202, the Schuylkill Expressway, and North Gulph Road are **temporarily suspended until further notice** due to the current health concerns. These Stitch-In Public Get-Togethers have been great fun and have increased our visibility in the area, bringing new members to our chapter. Hopefully we will be able to resume them soon.

## EDUCATION REPORT – PATTY SMITH GARDNER

Thirteen members of the PAC are currently working on the Group Correspondence Course (GCC) "Fandango" with teacher Barbara Kershaw. "Fandango" focuses on Punto Antico, one of many beautiful styles of Italian whitework embroidery. Punto Antico embroidery includes a lot of satin stitch, Palestrina and bullion knots, curls and scrolls. Italian hemstitch is also an integral part of any design, as well as drawn thread areas with sometimes simple and many times intricate needlewoven insertions.

## REGION REPRESENTATIVES REPORT – GERTY & DIANE

Money continues to be available to MAR members through the Joan Masterson and PRIDE scholarships.

As you have probably heard, due to the rising COVID numbers, the Clarion Hotel in Ocean City, Maryland is among many hotels on the Coastal Highway which have decided to shut down over the winter of 2020-2021, and therefore, Camp Wannastitch 2021 has been cancelled. Planning has already begun to make Camp Wannastitch 2022 the best retreat ever!! Please mark your calendars for January 14-17 2022, with an early bird start on Thursday, January 13, 2022.

The MAR 2020 Seminar “Get Stitching Gettysburg”, which had been postponed from 2020 to May 14-16, 2021 in Gettysburg, has now been cancelled. If you purchased tickets for the Seminar Opportunity Baskets and the Quilt, the drawings for the Baskets and Quilt will be held on Saturday, January 16, 2021. Winners will be notified and arrangements (via personal delivery or mail) will be made to get the Quilt and the contents of each basket to the winners as soon as possible. Please note that the winners will most likely not receive the baskets themselves due to the cost of packing and shipping the baskets. The next MAR newsletter will include the list of winners.

A MAR seminar is scheduled to be held in 2022 in Norfolk, Virginia.

**A VERY IMPORTANT NOTE ABOUT MAR EMAIL MESSAGES - DO NOT FORWARD MAR MESSAGES TO ANYONE, INCLUDING OTHER PAC/MAR MEMBERS!** Forwarding the message automatically unsubscribes you from the mailing list of the mail service that the MAR is using, Mailchimp. If you want to forward the message to someone else, save or copy/paste on your computer/tablet, and then send in a new email to your intended recipient.

May 2021 meeting –  
Birds of a Feather  
Sampler



### **BIRDS OF A FEATHER SAMPLER (CHART ONLY)–**

**Check made payable to “PAC EGA” for \$ 12**

**Mail to:**  
**Diane Bishop**  
(scrubbed)

**Name** \_\_\_\_\_  
**Address** \_\_\_\_\_  
**Phone** \_\_\_\_\_  
**Cell** \_\_\_\_\_  
**Email:** \_\_\_\_\_

## JANUARY MEETING – BEADED ICICLE

This Beaded Icicle looks lovely on your tree or in your window and would make a great family heirloom to be passed down through the generations. It sparkles with 4mm Crystal Bicone Beads and Seed Beads using a variation of Spiral Stitch. Spiral Stitch is a very easy stitch once you get into the rhythm of it. After you have completed the first 5 or 6 rows, the shape starts to form and it becomes much easier to see what you are doing. The icicle is approximately 4¾" (12cm) long by 5/8" (1.5cm) wide at the widest point.

This makes a perfect gift or package addition, or make a set to hang from many branches of your tree or in each window.

Patty will be making kits for this program for \$7 each, including all beads and the Fireline thread to make one Icicle. They will be in Crystal AB Swarovski Bicones and drop bead. There are a limited number of kits remaining.

Send an email with "Icicle Kit Order" in the subject to: **(scrubbed)**. Please include the number of kits that you would like, and Patty will get back to you about how to pay for them.



If you wish to use your own beads (how about another color??), here is the complete list of supplies needed to make one icicle:

- **50 4mm Fire Polished Round Beads or Swarovski Bicones (Crystal AB or color of your choice)**
- **1 13mm Swarovski Drop (Crystal AB or coordinating color of your choice)**
- **1.5 grams Size 8 Seed Beads (Toho Rainbow Crystal or color of your choice)**
- **3 grams Size 11 Seed Beads (Toho Rainbow Crystal or color of your choice)**
- **Size D Fireline or Power Pro (Crystal, White, or color to blend with beads)**
- **Size 10 Beading Needle • Beading mat, bead board or piece of felt (~6" square) to hold beads**

**The January Meeting is scheduled for Wednesday, January 27, 2021 at 7:30 P.M.**

**It is currently scheduled to be held via Zoom.**



## FEBRUARY MEETING – EMBROIDERED SPRING MASK

Please provide a piece of solid color cotton or other material suitable for a face mask for springtime. A pattern for the mask and sample embroidery patterns will be provided. You will use threads of your choosing from your own stashes to embellish your mask (remember to choose threads that will withstand repeated washing). Gertie Romer will discuss the various ways that she has been assembling masks.



## MARCH MEETING – SPRING GLORY EGA PETITE PROJECT

Lisa McGinnis will be teaching the silk ribbon embroidery EGA Petite Project called “Spring Glory” designed by Kim Sanders. The project can be finished as the top of an Altoids tin or similar sized rectangular box. You will need to print the instructions for the project from the EGA website <https://egausa.org/petite-projects/>. The materials for this project have been donated, and each kit will contain the following items:

6" square of white fabric like poplin or linen twill  
medium green, dark green, yellow and dark pink stranded cotton like DMC  
4mm ribbon in purple, green, medium blue, and pink.

If you would like Lisa to assemble a kit for you with these items, please contact Lisa at (scrubbed) no later than March 5, 2021.



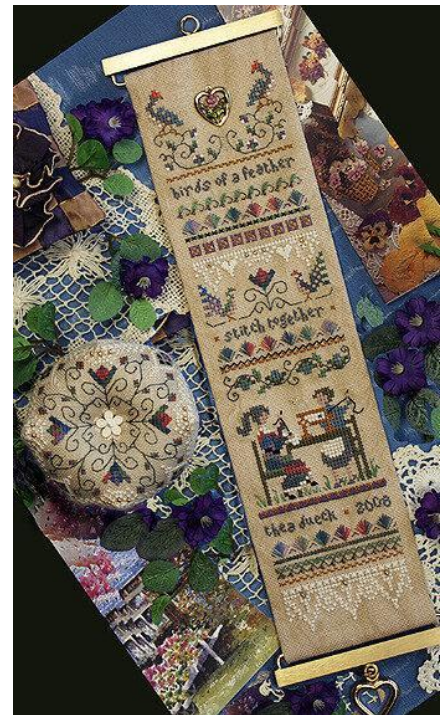
## APRIL MEETING – FIELD TRIP FOR 2020 ANNUAL MEETING?

Our Programs Chair, Diane Bishop, is hoping to find a place where we can take an outdoor field trip or just gather together safely outdoors for our postponed 2020 Annual Meeting. If you have any suggestions for a locale, please contact Diane at ([scrubbed](#)).



## MAY/JUNE/JULY MEETINGS – BIRDS OF A FEATHER “ZOOM” TOGETHER

Beginning with the May chapter meeting, we will be doing a group project of the “Birds of a Feather Sampler” by Thea Dueck of The Victoria Sampler. As she states on her website, “Whenever we sit down to stitch with others we seem to find instant friendships. As stitchers, we regularly flock together at various retreats, classes, or at each other’s homes, and many of us have found such wonderful deep friendships through this delightful pastime. I designed this antique-style sampler as an expression of my gratitude for all the friends with whom I’ve stitched, in appreciation of the great times and shared meals and laughter.” Feel free to substitute “Zoom” for “Stitch” on the piece, making your own unique souvenir of COVID-19.



Stitchers will supply their own materials. The stitch count is 36W x 153H. The model is stitched on 28 count Country Mocha or Platinum Cashel Linen with Kreinik #4 Braid, Dinky Dyes, Caron Waterlilies, Kreinik Mori, Needlepoint Inc., Au ver a Soie, SJ Designs beads, Mill Hill Beads, Jesse James Button, and a hand painted heart charm. A detailed list of supplies can be found at <https://victoriasampler.com/products/birds-of-a-feather-leaflet?> Feel free to make thread substitutions or pool together with others to share threads and beads. The chapter will offer the instruction leaflet only for \$12.00. Please complete the coupon found in this newsletter and send it with a check for \$12 made payable to “PAC-EGA” to Diane Bishop at the address on the coupon.



## PHILADELPHIA AREA CHAPTER EGA 2021 CALENDAR

JANUARY							FEBRUARY							MARCH						
S	M	T	W	T	F	S	S	M	T	W	T	F	S	S	M	T	W	T	F	S
					1	2		1	2	3	4	5	6		1	2	3	4	5	6
3	4	5	6	7	8	9	7	8	9	10	11	12	13	7	8	9	10	11	12	13
10	11	12	13	14	15	16	14	15	16	17	18	19	20	14	15	16	17	18	19	20
17	18	19	20	21	22	23	21	22	23	24	25	26	27	21	22	23	24	25	26	27
24	25	26	27	28	29	30	28							28	29	30	31			
31																				

APRIL							MAY							JUNE						
S	M	T	W	T	F	S	S	M	T	W	T	F	S	S	M	T	W	T	F	S
				1	2	3							1			1	2	3	4	5
4	5	6	7	8	9	10	2	3	4	5	6	7	8	6	7	8	9	10	11	12
11	12	13	14	15	16	17	9	10	11	12	13	14	15	13	14	15	16	17	18	19
18	19	20	21	22	23	24	16	17	18	19	20	21	22	20	21	22	23	24	25	26
25	26	27	28	29	30		23	24	25	26	27	28	29	27	28	29	30			
							30	31												

JULY							AUGUST							SEPTEMBER						
S	M	T	W	T	F	S	S	M	T	W	T	F	S	S	M	T	W	T	F	S
				1	2	3							1				1	2	3	4
4	5	6	7	8	9	10	1	2	3	4	5	6	7	5	6	7	8	9	10	11
11	12	13	14	15	16	17	8	9	10	11	12	13	14	12	13	14	15	16	17	18
18	19	20	21	22	23	24	15	16	17	18	19	20	21	19	20	21	22	23	24	25
25	26	27	28	29	30	31	22	23	24	25	26	27	28	26	27	28	29	30		
							29	30	31											

OCTOBER							NOVEMBER							DECEMBER						
S	M	T	W	T	F	S	S	M	T	W	T	F	S	S	M	T	W	T	F	S
					1	2							1				1	2	3	4
3	4	5	6	7	8	9	7	8	9	10	11	12	13	5	6	7	8	9	10	11
10	11	12	13	14	15	16	14	15	16	17	18	19	20	12	13	14	15	16	17	18
17	18	19	20	21	22	23	21	22	23	24	25	26	27	19	20	21	22	23	24	25
24	25	26	27	28	29	30	28	29	30					26	27	28	29	30	31	
31																				

PAC EGA Board Meetings – 2<sup>nd</sup> Monday of each month (except July and August, and subject to change)  
at Panera Bread, 150 Allendale Road in King of Prussia at 7 P.M.

Any chapter member is welcome to attend and participate in a Board meeting!

PAC EGA Chapter Meetings – 4<sup>th</sup> Wednesday of each month, subject to change, at Saint Luke Evangelical  
Lutheran Church, 203 North Valley Forge Road, Devon, at 7 P.M.

**Sharing Chapters:** Please email your newsletter to Laura Bonnington, Newsletter Editor,  
Philadelphia Area Chapter – (scrubbed)

(also, please ask if you want to use anything from this newsletter, I'd be happy to email you the document)



**sara caldwell**  
owner/designer

1165 west baltimore pike  
media, pa 19063  
telephone 610.892.2740  
[www.bluesantabeads.net](http://www.bluesantabeads.net)

***Hello Prospective Member!***

If you are reading this newsletter and you are NOT a member of the Chapter, we invite you to drop in for a meeting. See Page 2 for information about times and locations. We are always happy to see new faces. The guild has learning opportunities for stitchers of all levels, and we are always trying something new! For further information, please call our President, **Cinda Hall**, or our Membership Chair, **Phyllis Archer** (contact info on page 2), who would be happy to provide information. Come and check us out - **You don't have to stitch alone!**



Search for "Phila ega"



Search for  
"The Philadelphia Area  
Chapter the Embroiderers'  
Guild of America"